

Radius PCG™

Portable Real-time Capnography with Bluetooth® Connectivity



Actual Size

Measurements



End-tidal CO₂



Respiration Rate

- > **Immediate results** – minimal warm-up time, with fully accurate end-tidal carbon dioxide (EtCO₂) and respiration rate (RR) measurements and continuous EtCO₂ waveform displayed within 15 seconds¹
- > **Small, lightweight, and tetherless** – convenient during short-term EtCO₂ monitoring of adult, pediatric, and infant patients
- > **Designed to fit easily onto a breathing circuit** – flexible use across multiple care areas, including pre-hospital, emergency medicine, operating room, intensive care unit, long-term acute care, and patient transport
- > **Connectivity** – integrates with Masimo monitors to provide a larger waveform display, measurement trending, and seamless transfer of patient data to the electronic medical record

Features

- > **Simple, easy-to-use interface** for quick setup and one-touch programming
- > **Battery life up to 10 hours** with two standard AAA lithium batteries
- > **Audible and visual alarm system** for No Adapter, Clogged Adapter, No Breath (Apnea), Low Battery, Zero Point Adjustment, and adjustable High and Low EtCO₂ alarms
- > **Easy to maintain** with no routine calibration required
- > **Small, portable design** easily stores in a crash cart

Alarm Limits

Alarm limits and visual alarm status indicator; silence active alarms for two minutes

End-tidal Carbon Dioxide

Quantitative, continuous EtCO₂ is updated every breath

Capnogram

14.4 second sweep of CO₂ values

Power Button

Warm-up time to full accuracy within 15 seconds¹



Bluetooth LE

Wireless connection to a compatible smart device or host for data storage and display

Respiration Rate

RR is displayed after two breaths and updated every breath

Airway Adapter

Available in adult/pediatric and infant sizes

Radius PCG Specifications

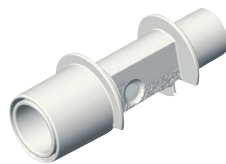
RANGES	ENVIRONMENTAL
CO ₂ 0-99 mmHg 0-9.9 kPa	Operating temperature -5 to 50° C (23 to 122° F)
RR 3-150 bpm	Operating atmospheric pressure 60 to 120 kPa
ACCURACY (STANDARD CONDITIONS)	Operating humidity < 50 hPa H ₂ O (41% RH at 50° C)
CO ₂ 0-40 mmHg ±2 mmHg; 41-99 mmHg 6% of reading	Storage temperature -40 to 70° C (-40 to 158° F)
0-5.3 kPa ±0.3 kPa; 5.4-9.9 kPa 6% of reading	Storage atmospheric pressure 50 to 120 kPa
RR ±1 bpm	PHYSICAL CHARACTERISTICS
BATTERIES	Dimensions (Radius PCG) 52 x 44 x 39 mm (2.1 x 1.8 x 1.6 inches)
Type 2 (two) AAA Cell Alkaline or Lithium	Weight < 65 g (1.2 oz) with batteries
Battery life (Radius PCG) 4 hours (Alkaline) 8 hours (Lithium)	ADAPTER INFORMATION
	Dead space adult/pediatric6 ml
	Dead space infant1 ml

Ordering Information



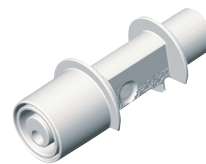
> Radius PCG*

Radius PCG (mmHg) PN 9961
Radius PCG (kPa) PN 9962



> EMMA® Airway Adapter

Adult/Pediatric
Box of 25
PN 17448



> EMMA Airway Adapter

Infant
Box of 10
PN 17449

*In order for the Radius PCG to provide readings, either of the listed airway adapters is required. Kit includes Radius PCG, pouch, and lanyard.

¹ Operator's Manual. ² Link MS, et al. *Circulation*. 2015; 132(suppl 2): S444-S464. ³ Neumar RW et al. *Circulation*. 2010;122:S729-S767.

Caution: Federal (USA) law restricts this device to sale by or on the order of a physician. See instructions for use for full prescribing information, including indications, contraindications, warnings, and precautions.

Masimo U.S.
Tel: 1 877 4 Masimo
info-america@masimo.com

Masimo International
Tel: +41 32 720 1111
info-international@masimo.com

